

CPCRN supports 8 pan-Canadian projects
that fall under **3** research pillars and **1** Primary Care Information System

INTEGRATION OF CARE

PILLAR LEAD: SHELLEY DOUCET



PriCARE 2 - Case Management in Primary Healthcare for People with Complex care Needs to Improve Integrated Care: The Role of Facilitation

Nominated PI: Catherine Hudon

Provinces: SK, QC, NB, NS, NL



Screening for Poverty and Related Social Determinants and Intervening to Improve Knowledge of and Links to Resources (SPARK Study)

Nominated PI: Andrew Pinto

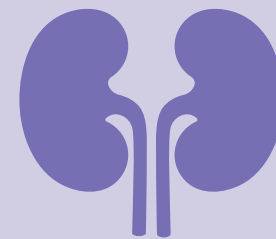
Provinces: MB, NS, NL, ON, SK



Structured Process Informed by Data, Evidence and Research (SPIDER) Study

Nominated PI: Michelle Griever

Provinces: BC, AB, MB, ON, QC, NS, NL



Chronic Kidney Disease (CKD) Epidemiology, Management, and Prevention in Canadian Primary Care

Nominated PI: Paul Ronksley

Provinces: AB, MB, ON

ACCESS TO CARE

PILLAR LEAD: ONIL BHATTACHARYYA

Impact of a Pan-Canadian CQI Cohort Program on Advanced Access to Support Primary Healthcare Clinics

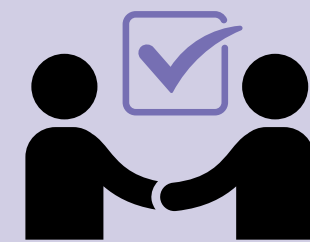
Nominated PI: Mylaine Breton

Provinces: ON, QC, NB



INDIGENOUS HEALTH

PILLAR LEAD: KIMBERLY FAIRMAN



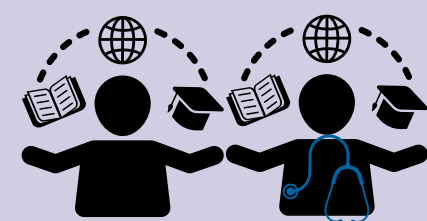
In development

PRIMARY CARE INFORMATION SYSTEM

Spreading and Scaling Ways to Decrease Inappropriate Antibiotic Use in Primary Care Patients with Viral Respiratory Tract Infections

Nominated PI: David Barber

Provinces: BC, AB, MB, ON, NS, NL



An Infrastructure for Primary Care to Learn Together with our Patients

Nominated PI: Sharon Johnston

Provinces: BC, ON, NL

OECD Patient Reported Indicator Survey (PaRIS) Project

Nominated PI: Sabrina Wong

Provinces: BC, AB, SK, MB, ON, QC, NB, NS, NL, PEI

